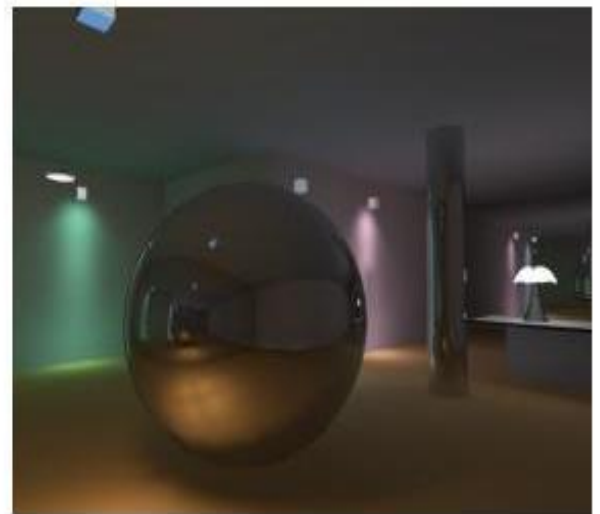
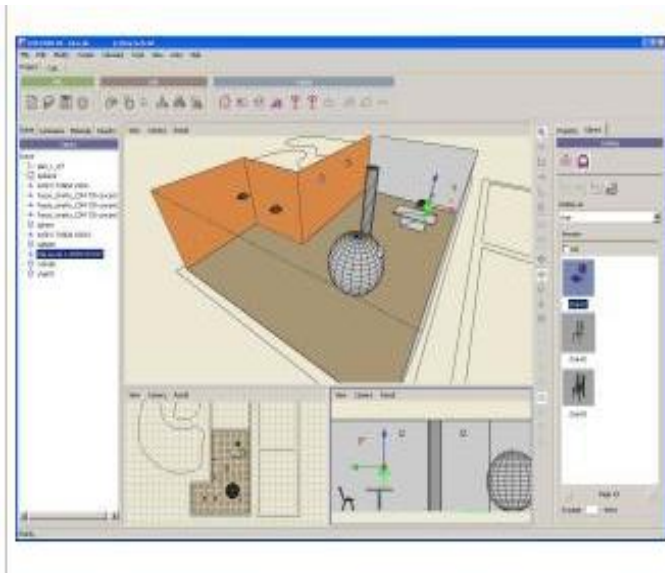




**FOR IMMEDIATE RELEASE**

## **OxyTech Srl and Lambda Research Corporation announce the release of LITESTAR 4D**



**Littleton, MA and Cornaredo, Italy– October 1, 2010**

**LITESTAR 4D** is the ultimate program for interior and exterior lighting design. The program was completely redesigned from the ground up with ease of use in mind for both the occasional and expert user. Three important things were priorities in this redesign; First, the capability to interactively create scenes internally using LITESTARs CAD geometry generator. Second, the capability to import CAD geometry from the leading CAD vendors. Finally, the ability to access vendor luminaire data directly through the import of IES and Eulumdat data or download from partner WebCatalogs directly available from their website or Oxytech's web site.

**LITESTAR 4D** includes the following important new features:

- A brand new easy to use graphical user interface to create CAD geometry using standard Windows drag and drop capabilities, icons, toolbars and menus.

-more-

- A new all inclusive data format, OXL, the natural next step of evolution of the Eulumdat and IES file formats. This format combines not only the luminaire photometry but the 3D CAD geometry and full scene rendering information in one complete set of data. This new data specification replaces our old FDB format.
- The wide use of the Drag&Drop feature at all levels, including data acquisition via the Internet through WebCatalogs. This format is surprisingly easy to use and works exclusively with simple Drag&Drop mouse operation.
- The option to import 2D (DXF format) and 3D (3DS and OBJ formats) files directly into a working scene with simple Drag&Drop mouse operation.
- A new powerful calculation and ray trace rendering engine based on the revolutionary Photon Mapping method. This new engine calculates a fully rendered scene in just seconds for extraordinary results.
- A powerful new photometric data manager to plot IES and Eulumdat files

**LITESTAR 4D Download** Download the new program at :  
<http://www.oxytech.it/software/cdoxy.asp?Richiesta=LITESTAR-4D-Open-1.0&LN=UK>

### **About Lambda Research Corporation**

Lambda Research Corporation is a worldwide developer and supplier of optical engineering software and services for the Life Sciences, Industrial Manufacturing, Lighting, Display, Aerospace, and Information Technology markets. Its technical staff has expertise in optical engineering, software development and hands-on applications engineering. Its products include TracePro®, the market leading illumination design software, and OSLO lens design software. Additional information about Lambda Research Corporation can be found at [www.lambdares.com](http://www.lambdares.com).

### **Company Contacts:**

#### **OxyTech Srl**

Offices and Laboratories  
Via G.B.Vico 54-56  
I - 20010 Cornaredo (MI) Italy  
Tel. +39 02 93563258  
[www.oxytech.it](http://www.oxytech.it)

Email: [cse@oxytech.it](mailto:cse@oxytech.it)

#### **Lambda Research Corporation**

25 Porter Rd  
Littleton, MA 01460-1434  
USA  
Phone: +1-978-486-0766  
[www.lambdares.com](http://www.lambdares.com)

Carolyn Cary-Johnson, Technical Sales  
Email: [techsales@lambdares.com](mailto:techsales@lambdares.com)