

Press Release

For More Information Contact:

Michael Gauvin
VP Sales & Marketing
Lambda Research Corporation
25 Porter Road
Littleton, MA 01460
Phone: 978-486-0766 Ext. 11
Fax: 978-486-0755
Email: sales@lambdaresearch.com



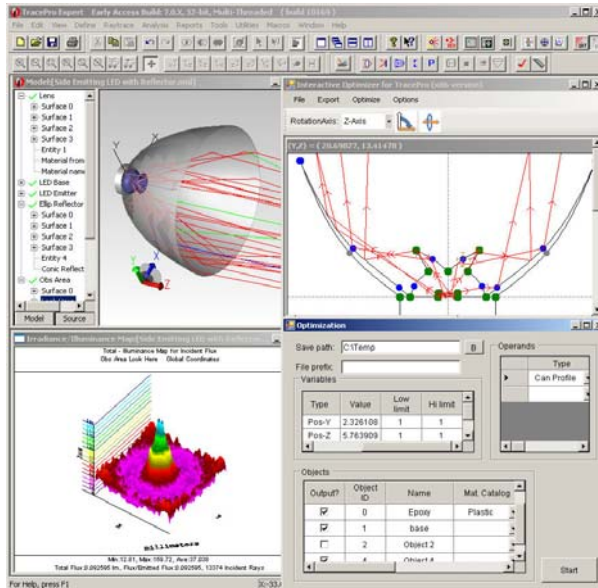
Lambda Research Corporation Announces the Release of TracePro 7.0, Optomechanical Design Software with multi-threading capability

Littleton, Massachusetts – September 30, 2010 – TracePro 7.0 increases raytracing speed up to 10 times over our 6.0 version using new multi-threading algorithms. This release also features a new interactive optimizer, rearrangeable system tree, new Reptile™ geometries and irradiance options.

TracePro 7.0 uses multi-threaded algorithms to raytrace on all the cores in Intel or AMD multi-core CPUs. Simulations done on a Dual Quad core computer show raytracing improvement of up to 10 times over previous releases when simulating LED, lighting, display, biomedical and aerospace systems.

The new interactive optimizer is specifically designed for non-sequential design on LED and illumination systems. The optimizer features a sketch utility for quick design entry, interactive raytrace for design verification, downhill simplex optimizer with interactive entry of target specifications.

Other new features include a rearrangeable system tree to create assemblies and standard drag and drop operations to arrange parts and assemblies. Two new irradiance options have been added including a new rainbow palette and normalization for stray light point source transmittance calculations. TracePro 7.0 also adds two new RepTile geometries, a flattened and pointed cone for the backlight display simulation.



--- more ---

Based in Littleton, Mass., Lambda Research Corporation was founded in 1992 and is a privately held company. Lambda is an industry leader in stray light analysis, illumination system design and analysis, and custom software development. Lambda Research publishes TracePro® software for optomechanical modeling and OSLO® software for optical design. The company's mission statement is to establish a technology bridge between optical engineers and mechanical engineers by providing state-of-the-art optomechanical design and analysis software, services and technical support to the optics industry worldwide. For more information, please visit the company's web site at www.lambdares.com.